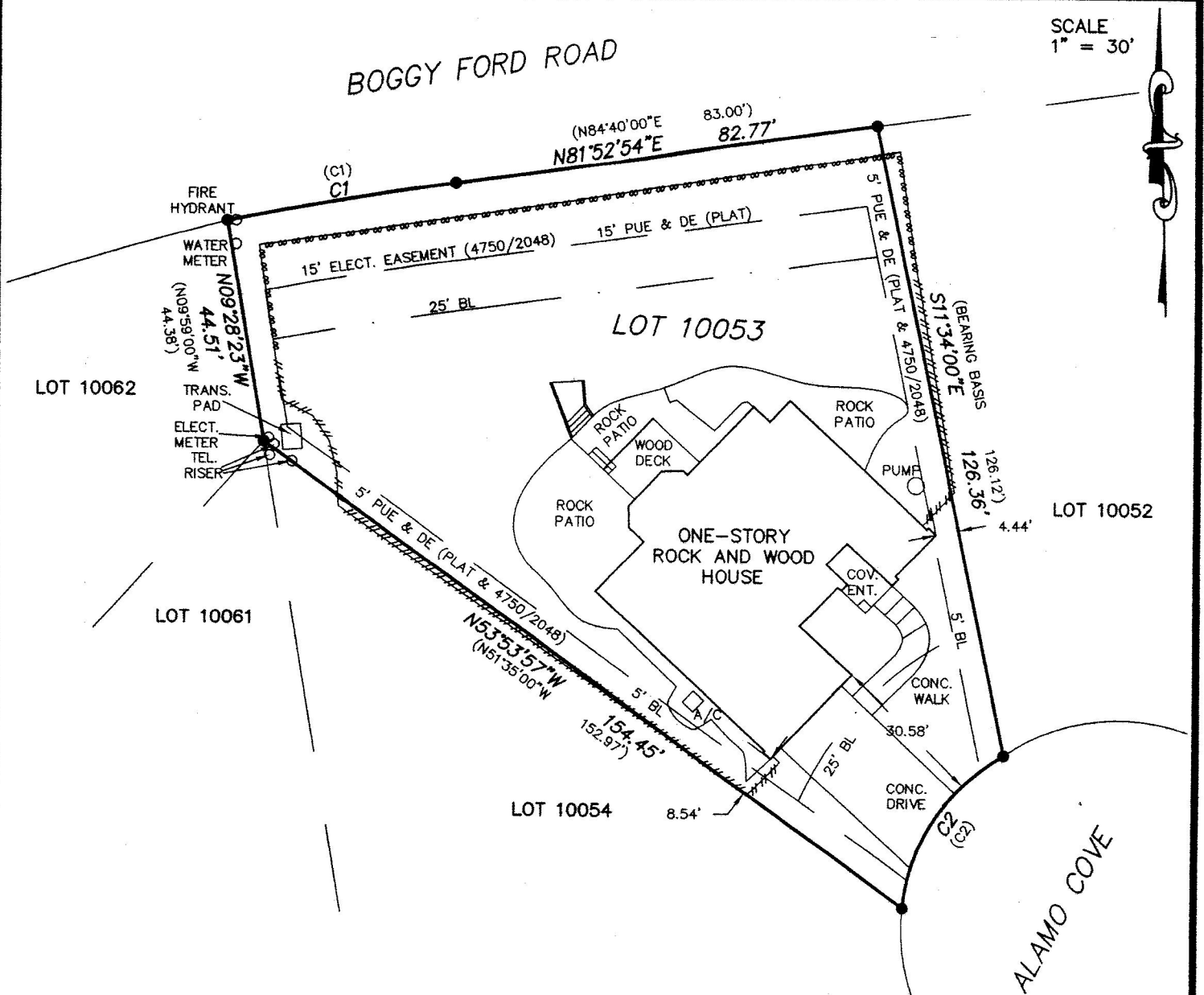


SURVEY

SCALE
 1" = 30'



RESTRICTIVE COVENANTS OF RECORD AS ITEMIZED HEREIN: VOLUME 51, PAGE 79, PLAT RECORDS, AND VOLUME 3987, PAGE 2140, DEED RECORDS, AND DOCUMENT NO. 2000006308, OFFICIAL PUBLIC RECORDS, TRAVIS COUNTY, TEXAS.
 (DOES AFFECT THIS TRACT)

ELECTRIC EASEMENTS AS RECORDED IN VOLUME 1169, PAGE 89 AND VOLUME 3950, PAGE 1678, DEED RECORDS, TRAVIS COUNTY, TEXAS.
 (BLANKET EASEMENTS--DOES AFFECT THIS TRACT)

INUNDATION EASEMENT TO LCRA AS RECORDED IN VOLUME 3987, PAGE 2140, DEED RECORDS, TRAVIS COUNTY, TEXAS.
 (DOES NOT AFFECT THIS TRACT)

LEGEND

- = IRON ROD FOUND
- = IRON ROD SET
- ⊗ = "X" IN CONCRETE
- △ = CALC. PROP. COR.
- () = RECORD PER PLAT
- #— = WOOD FENCE
- *— = WIRE FENCE
- = CHAIN LINK FENCE
- PUE = PUBLIC UTILITY EASEMENT
- DE = DRAINAGE EASEMENT
- BL = BUILDING LINE
- G/M = GAS METER
- E/M = ELECTRIC METER
- — — = OVERHEAD POWERLINE
- ⊙ = POWER POLE
- — — = GUY WIRE ANCHOR

CURVE TABLE

CURVE	LENGTH	RADIUS	CHORD	BEARING
C1	44.95	610.00	44.94	N80°02'12"E
(C1)	45.31	610.00	66.48	N63°08'54"E
C1	37.58	40.00	45.30	S82°33'00"W
(C1)	40.0	40.00	41.89	S43°28'00"W